



LE PRODUCTS
MANUFACTURED
UNDER AN ISO
9001:2000
CERTIFIED QUALITY
SYSTEM

8845 MONOLEC[®] NATURAL GAS ENGINE OIL

Superior multi-grade, low ash natural gas engine oil

8845 MONOLEC[®] Natural Gas Engine Oil is a superior, multi-grade, low ash natural gas engine oil formulated for use in stationary and mobile natural gas engines. It is formulated using a synergistic blend of high-performance base fluids, salicylate detergent chemistry for exceptional deposit control and nitration resistance, and superior wear reducing additives, including MONOLEC[®], LE's exclusive wear reducing additive. This synergistic formula decreases friction, minimizes wear, removes heat, and keeps engine components clean. It has been proven in various engine makes and models, under severe operating conditions.



FEATURES

- Ⓛⓔ Multi-grade viscosity provides wide temperature range performance.
- Ⓛⓔ Superior oxidation stability and nitration resistance resulting in extended oil life.
- Ⓛⓔ Efficient detergent/dispersant additives keep engines clean.
- Ⓛⓔ Minimizes valve seat recession.
- Ⓛⓔ Increased wear protection.
- Ⓛⓔ Contains MONOLEC[®], LE's exclusive wear-reducing additive.
- Ⓛⓔ Reduces oil consumption resulting in lower maintenance and cost of use.

RECOMMENDATION

- Stationary gas engines used for power generation or natural gas pumping operations.
- Can be used with sparkplug ignited engines that have an operating range up to 3000 HP.
- Meets the performance requirements for mobile applications such as buses using engine types like Cummins, Detroit Diesel, etc.

**LUBRICATION
ENGINEERS, Inc.**

Leaders in Lubricants



Technical Data

PHYSICAL CHARACTERISTICS – TYPICAL:

8845

Viscosity cSt @ 100°C	14.27
Viscosity cSt @ 40°C	109.53
Viscosity SUS @ 100°F (Calc)	562.92
Viscosity SUS @ 210°F (Calc)	76.07
Viscosity Index	132
Sulfated Ash %	0.44
API Gravity	30.1
Specific Gravity	0.875
Density (Calc) #/G	7.291
Copper Corrosion (D130)	1b
Flash Point (D92) °F (°C)	446 (230)
HTHS Vis @ 150, cP (D4683)	4.5
Pour Point (D97) °F (°C)	-17 (-27)
SAE Grade	15W40
Acid Number (D664)	2.94
Base Number (D2896)	5.03
Color	red

MEETS THE PERFORMANCE REQUIREMENTS OF:

API CF
Caterpillar (3600)
Ajax
Bessemer
Clark
Cooper
Cummins CES 20074 (mobile)
Guascor
Ingersol
Jenbacher
Superior
Wartsila
White
Detroit
Waukesha
Deutz



LUBRICATION
ENGINEERS, Inc.

Leaders in Lubricants



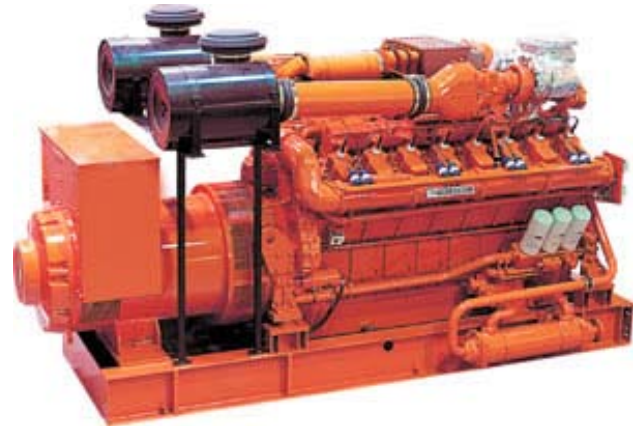


LE PRODUCTS
MANUFACTURED
UNDER AN ISO
9001:2000
CERTIFIED QUALITY
SYSTEM

8945 MONOLEC® NATURAL GAS ENGINE OIL

Superior straight-grade, low ash natural gas engine oil

8945 MONOLEC® Gas Engine Oil is a superior, straight-grade, low ash natural gas engine oil formulated with cutting edge technology that differentiates its performance from other natural gas engine lubricants. Formulated using high-performance base fluids, salicylate additive chemistry for superior deposit control, and outstanding wear reducing additives, including MONOLEC®, LE's exclusive wear-reducing compound. All of these components work together synergistically to greatly decrease friction, minimize wear, remove heat, and keep engine components clean. It has been proven in various engine types, under severe operating conditions.



FEATURES

- Ⓛ Superior oxidation stability and nitration resistance resulting in extended oil life.
- Ⓛ Efficient detergent/dispersant additives minimize engine deposits.
- Ⓛ Minimizes valve seat recession.
- Ⓛ Excellent wear protection.
- Ⓛ Contains MONOLEC®, LE's exclusive wear-reducing additive.
- Ⓛ Reduces oil consumption resulting in lower maintenance and cost of use.

RECOMMENDATION

- Stationary gas engines used for power generation or natural gas pumping operations.
- Can be used with sparkplug ignited engines that have an operating range up to 3000 HP.
- Meets the performance requirements for mobile applications such as buses using engine types like Cummins, Detroit Diesel, etc. fueled by CNG, LNG, or propane.

**LUBRICATION
ENGINEERS,® Inc.**

Leaders in Lubricants



Technical Data

PHYSICAL CHARACTERISTICS – TYPICAL:

8945

Viscosity cSt @ 100°C	14.08
Viscosity cSt @ 40°C	129.6
Viscosity SUS @ 100°F (Calc)	600.64
Viscosity SUS @ 210°F (Calc)	74.33
Viscosity Index	106
Calculated Sulfated Ash %	0.47
API Gravity	29.9
Specific Gravity	0.8767
Density (Calc) #/G	7.300
Copper Corrosion (D130)	1a
Flash Point (D92) °F (°C)	489.2 (254)
HTHS Vis @ 150, cP (D4683)	4.2
Pour Point (D97) °F (°C)	-0.4 (-18)
SAE Grade	40
Acid Number (D664)	2.94
Base Number (D2896)	4.99
Color	red

MEETS THE PERFORMANCE REQUIREMENTS OF:

API CF
Caterpillar (3600)
Ajax
Bessemer
Clark
Cooper
Cummins CES 20074 (mobile)
Guascor
Ingersol
GE Jenbacher 1000-0125
Superior
Wartsila
White
Waukesha
Detroit
Deutz



LUBRICATION
ENGINEERS,® Inc.

Leaders in Lubricants

